



# INTEGRATED DEVELOPMENT FOCUS (IDF-S)

## ORGANIZATIONAL PROFILE





## About the Integrated Development Focus (IDF-S)

### Integrated Development Focus (IDF-S)

Integrated Development Focus (IDF) was established May 1st 1999 as a non-partisan non-governmental, none for profit making organization. The headquarters of IDF is Belet-Hawa district of Gedo region of Somalia, and has operational presence and experience in the entire Gedo region with an ambition to expand and strengthen its operational scope into the greater South Central Somalia. IDF pursues a rights based approach grounded on the belief that people are entitled to a claim of basic conditions of living with dignity and access to opportunity and dignity, as a basis of fulfilling their human potential.

IDF therefore seeks to stimulate sustainable developmental change amongst vulnerable communities living in south central region. IDF's mandate and core business is to facilitate humanitarian assistance to disaster affected communities, resilience building and general community development. These ambitions are realized through (core strategies of) knowledge transfer, influencing, brokering linkages and facilitating/ implementing integrated people centered humanitarian and development programs. The main developmental approach of IDF is to enable communities find solutions to their socio-economic challenges.

IDF has an impressive track record and experience in implementing community anchored programs in Governance; Peace building; Education; Livelihoods and Food Security; Water Sanitation and Hygiene (WASH) Protection and Health: (Health Education). Additionally, human rights, gender and environment have over time been addressed by IDF as crosscutting issues. In defining and operationalizing these strategies, IDF takes cognizance of important international, national and local development

trends and contexts. The main target groups of IDF include vulnerable and marginalized pastoralists, poor urban communities, internally displaced persons (IDP) (individuals, families, groups and communities).

Pursuance of a system and integrated approach to programming, the organization collaborates closely with likeminded institutions from the CSO, public and private sectors. In this regard IDF is a member of various networks such as Somalia South-Central Non State Actors (SOSCENSA), Peace and Human Rights Network (PHRN), Somali NGO Consortium, Gedo Peace Consortium (GPC) and East, Horn of Africa Human Rights Defenders (EHAHRD), Food Security Cluster, Protection Cluster, Education Cluster and WASH Cluster. IDF has graciously received technical and financial support from amongst others FAO, WVI, WFP, PACT, UNHCR, DFID, OFDA/USAID, UNICEF, UNDP, FAO ECHO/EU, UN etc. directly or indirectly.

IDF has a well-defined and working internal organizational structure. IDF works through a well resourced (staff, infrastructure, equipment) field office in northern Gedo. Policy and strategic guidance, leadership and oversight are offered by a diverse and competent Board of Directors (BODs).



## Organizational Identity

The organizational identity and philosophy of IDF is elaborated as follows:

**Vision:** Peaceful, just, well-governed and prosperous Somalia

**Mission:** To improve the living conditions of vulnerable and marginalised communities to overcome poverty and achieve socio-economic justice by facilitating relief, equitable and sustainable development programs

**Organizational Values:** IDF believes in, and is guided by the following ideals:

1. *Respect:* We acknowledge and respect the diversity and variety of values, practices and positions of the communities, institutions and people we work with, even where we hold different opinions.

2. *Excellence:* We are committed to achieve and maintain the highest standards and superior quality in delivering of our program services.

3. *Integrity and credibility:* We are committed to honesty, truthfulness, accuracy and trustworthiness in all areas of our operations and in the use of all the information and/or resources entrusted to us for the service of our beneficiaries. We accept responsibility for our collective and individual actions.

4. *Accountability and Transparency:* We use strategically and prudently all resources entrusted to us to achieve the most impact with minimal means. We are openly accountable on how the resources at our disposal have been used.



**Organizational Culture:** IDF is dedicated to promoting the following organizational philosophy:

1. *Commitment:* Those we serve come first in everything we do. We champion the realization of their full potential to lead fulfilling lives and contribute meaningfully to society.
2. *Results orientation:* We are driven by the changes and impacts we exist to create. We are committed to providing timely and high quality solutions and services. We closely collaborate the efforts of each person/ actor in delivering our services.
3. *Open communication:* We believe in granting access to information. We value and use competently the best approaches to communicate amongst ourselves and with others. We support all stakeholders to understand and express themselves in relation to their wellbeing and provide input in our service delivery
4. *Competence:* We are committed to acquire, develop and retain the highest possible quality personnel as a basis of assuring the best organizational performance and standards.
5. *Creativity and innovation:* We are committed to ensuring a work environment that encourages innovativeness and embracing new ideas and technologies to make our work more effective.







### Geographic Areas Covered

South central Somalia with particular focus in Gedo region.











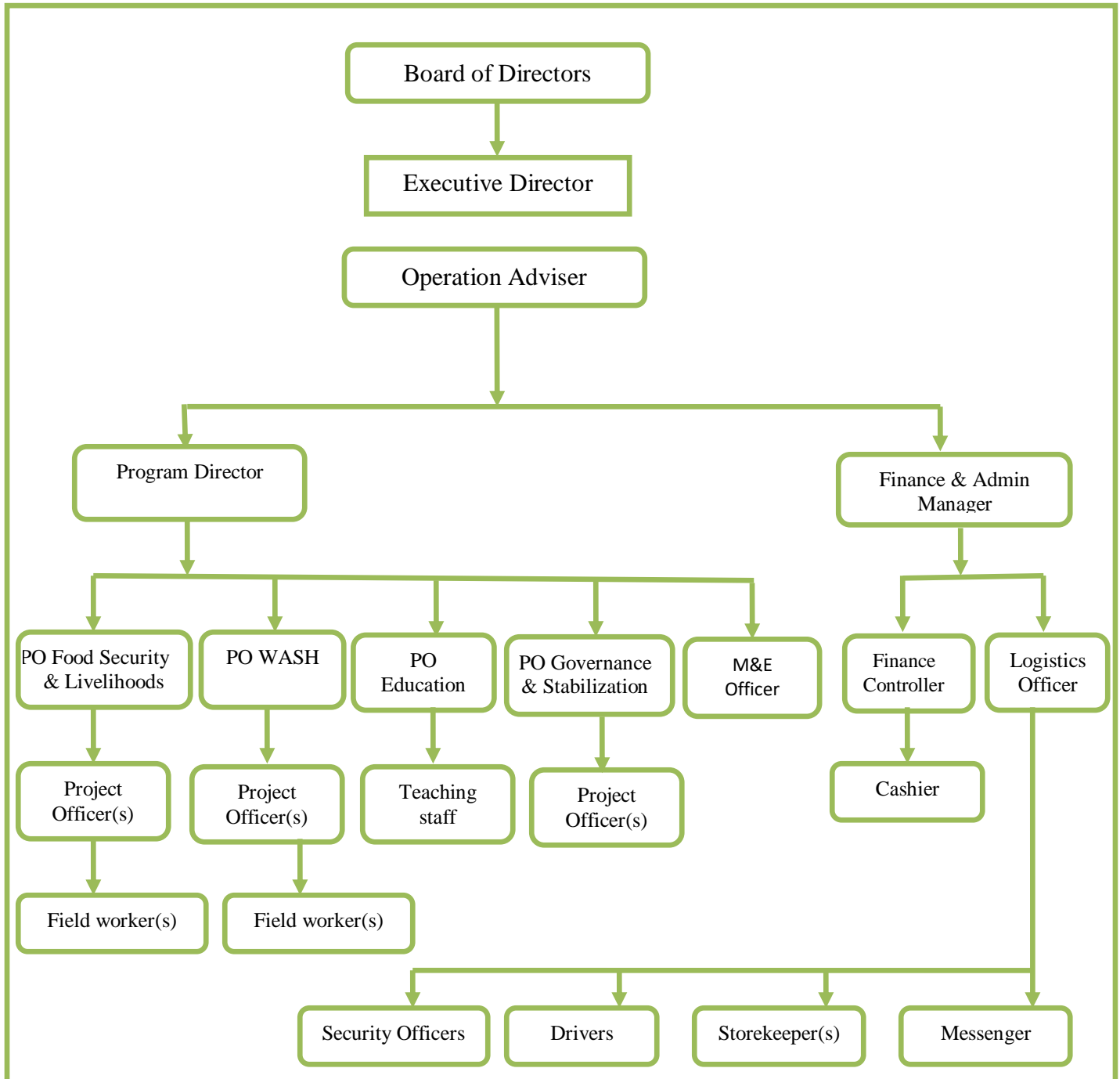
### IDF Past Performance (Sample Programmes/Projects Implemented)

Project Name	Project/Programme components	Location	Year	Donor
General relief food distributions (GFD)	<ul style="list-style-type: none"> <li>General relief food distributions for the most vulnerable communities in Belet-Hawa district of Gedo region to avoid precipitation of food insecurities and support of livelihoods</li> </ul>	Belet-hawa	2000 - 2009	CARE and WFP
Maize Milling Machine	<ul style="list-style-type: none"> <li>Income generating activities for 50 business women groups in Belet-hawa for support of their business activities</li> </ul>	Belet-hawa	2008	CIDA
Bee keeping Project	<ul style="list-style-type: none"> <li>Training and distribution of bee keeping hives for vulnerable farmers to introduce bee keeping as an alternative income and food source</li> </ul>	Bakol and Gedo	2003	FAO
Bee keeping Project	<ul style="list-style-type: none"> <li>Training and distribution of bee keeping hives for vulnerable farmers to introduce bee keeping as an alternative income and food</li> </ul>	Gedo region	2004	TROCAIRE
PRMN	<ul style="list-style-type: none"> <li>Population Movement Tracking and Protection Return Monitoring ( ongoing project) to record and register population movements within Somalia and bordering neighboring countries (Ethiopia and Kenya )</li> </ul>	Belet-hawa	2006 – to date	NRC/UNHCR
Assorted seed distributions and fodder reserve projects	<ul style="list-style-type: none"> <li>Assorted seed distributions and fodder reserve projects to increase food security in northern Gedo</li> <li>Awareness and sensitization of communities on wise use of water resource and natural resources management.</li> </ul>	Northern Gedo	2003 – 2004	TROCAIRE
WASH	<ul style="list-style-type: none"> <li>Rehabilitation of shallow wells and water tracking to improve water access in northern Gedo</li> <li>Awareness and sensitization of communities on wise use of water resource and natural resources management.</li> </ul>	Belet-hawa	2006	CARE/ECHO
ERF Project	<ul style="list-style-type: none"> <li>ERF Project funded by CHF 2011 in Belet-Hawa in consortium with ASEP and NAPAD to improve food security and livelihood system for vulnerable population affected by the recent Conflict in Belet-hawa.</li> </ul>	Belet-hawa	2011	CHF
TGFD projects	<ul style="list-style-type: none"> <li>Target General relief food distributions for the most vulnerable communities in Belet-Hawa district of Gedo region to avoid precipitation of food insecurities and support of livelihoods</li> </ul>	Belet-hawa	2013	WFP
SFP Project	<ul style="list-style-type: none"> <li>School Feeding Program in Gedo region</li> </ul>	B/hawa, Dollo, Lugh and Elwak	2012 - 2013	WFP
FGM	<ul style="list-style-type: none"> <li>Community mobilization training targeting 90 participants including women groups, religious groups, youth against FGM in three shifts in Belet-hawa district</li> </ul>	Belet-hawa	2012	USA Diaspora

GBV Project	<ul style="list-style-type: none"> <li>Community Gender-based Violence mobilization targeting 75 participants including IDPS, Returnees and Host Community in Belet-hawa district</li> </ul>	Belet-hawa	2012	UK Diaspora
EGF Project	<ul style="list-style-type: none"> <li>GBV Violence on Rape Case and Referral support mechanism</li> </ul>	Belet-hawa	2013	NRC
Peace Project	Cross border peace building initiatives	Belet-hawa	2013 - 2014	PACT-World
Conditional cash transfer project	<ul style="list-style-type: none"> <li>Conditional cash transfer project</li> </ul>	Belet-hawa	2005	FAO
Input Distribution Project	<ul style="list-style-type: none"> <li>Support to agriculture sector through input distribution</li> </ul>	Belet-hawa	2004	FAO
FFA Project	<ul style="list-style-type: none"> <li>Road Rehabilitation Project</li> </ul>	Belet-hawa	2012	WFP
FFA/FFT	<ul style="list-style-type: none"> <li>Road Rehabilitation</li> <li>Water catchment</li> <li>Canal Rehabilitation and</li> <li>Adult Literacy Education</li> </ul>	Belet-hawa	2014 to date	WVS
TGFD Projects	<ul style="list-style-type: none"> <li>General relief food distributions for the most vulnerable communities</li> </ul>	Belet-hawa	Sep to Dec 2014	WVS
FFA/FFT/FFW Project	<ul style="list-style-type: none"> <li>Road Rehabilitation</li> <li>Water catchment</li> <li>Canal Rehabilitation</li> <li>Sanitation Program and</li> <li>Adult Literacy Education</li> <li>Awareness and sensitization of communities on wise use of water resource and natural resources management.</li> </ul>	Belet-hawa	June – Dec 2015	WVS
Agricultural Input Distribution	<ul style="list-style-type: none"> <li>Improved food and nutrition security and restore livelihoods of affected farmer population in central southern Somalia</li> </ul>	Luuq	March – Sept 2015	FAO
Agricultural Input Distribution	<ul style="list-style-type: none"> <li>Improved food and nutrition security and restore livelihoods of affected farmer population in central southern Somalia</li> </ul>	Luuq	Oct 2015 – March 2016	FAO
Voucher for Asset (FFA)	<ul style="list-style-type: none"> <li>Construction and rehabilitation of infrastructure</li> </ul>	Belet-hawa	July-Dec 2016	WVS
SHIR Project	<ul style="list-style-type: none"> <li>Somali Harmonizing inter and Intra Communal relationship</li> </ul>	Belet-hawa	Nov 2016 – July 2018	PACT/USAID
Voucher for Asset (FFA)	<ul style="list-style-type: none"> <li>Construction and rehabilitation of infrastructure</li> </ul>	Belet-hawa	2017	WFP
Food Aid Voucher	<ul style="list-style-type: none"> <li>Provision of Food Aid Voucher to Drought Response</li> </ul>	Belet-hawa	2018	WVS/WFP
GFD AND FFA	<ul style="list-style-type: none"> <li>General Food Distribution and Rehabilitation of Infrastructure and Distribution food for IDPs</li> </ul>	Belet-hawa	2018	WFP
RASMI Project	<ul style="list-style-type: none"> <li>Regional Approaches for sustainable conflict management and integration (Rasmi)</li> </ul>	Belet-hawa, Dollow and Luuq	2018 - 2020	PACT/EUTF

Institutional Capacity Building	<ul style="list-style-type: none"> <li>Institutional Capacity Building</li> </ul>	Belet-hawa	March – Sept 2018	SYD Forum
VFT Project	<ul style="list-style-type: none"> <li>Cash Based Transfer (CBT Project)</li> </ul>	Belet-hawa	February – Nov 2020	WFP
SWERC Project	<ul style="list-style-type: none"> <li>Somali Wellness economic recovery consortium</li> </ul>	Belet-hawa	15 <sup>th</sup> February 2021 – 14 <sup>th</sup> July 2021	GCERF
RASMI Project	<ul style="list-style-type: none"> <li>Regional Approaches for sustainable conflict management and integration (Rasmi-II)</li> </ul>	Belet-hawa and Dollow	15 <sup>th</sup> March 2021 – 14 <sup>th</sup> February 2022	PACT/EUTF
SWERC Project	<ul style="list-style-type: none"> <li>Somali Wellness &amp; Economic Recovery Consortium (SWERC)</li> </ul>	Belet-hawa	2022 - 2024	GCERF

# Organizational Structure



## Integrated Development Focus (IDF)

Contacts:  
+252 615553562 / +254 700165482  
Skype: [idf.somalia](https://www.skype.com/user/idf.somalia)  
Website: [www.idfsomalia.org](http://www.idfsomalia.org)

Contact Emails:  
[info@idfsomalia.org](mailto:info@idfsomalia.org)